

# Changing the HID mode with the "PTC USB Tool"

## 1 Download and install the latest version of "PTC USB Tool"

PTC USB Tool was designed to check the some features ob pei tel USB devices. In addition, you can use it to make various configurations and settings of USB devices.

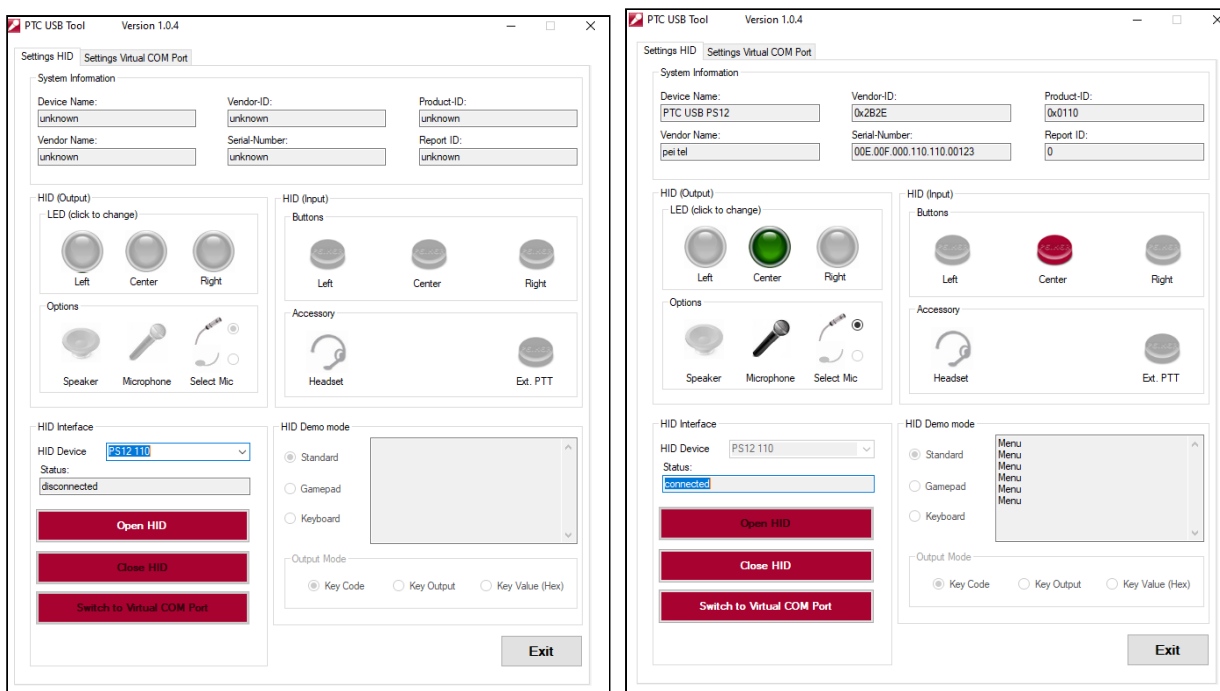
- The program can be downloaded from our website: [https://www.peitel.com/fileadmin/user\\_upload/dokumente/software/PtcUSBsetup12042016.zip](https://www.peitel.com/fileadmin/user_upload/dokumente/software/PtcUSBsetup12042016.zip)

## 2 Start the program "PTC USB Tool" and connect your pei tel USB device

### 2.1 Connect the pei tel USB device to your computer

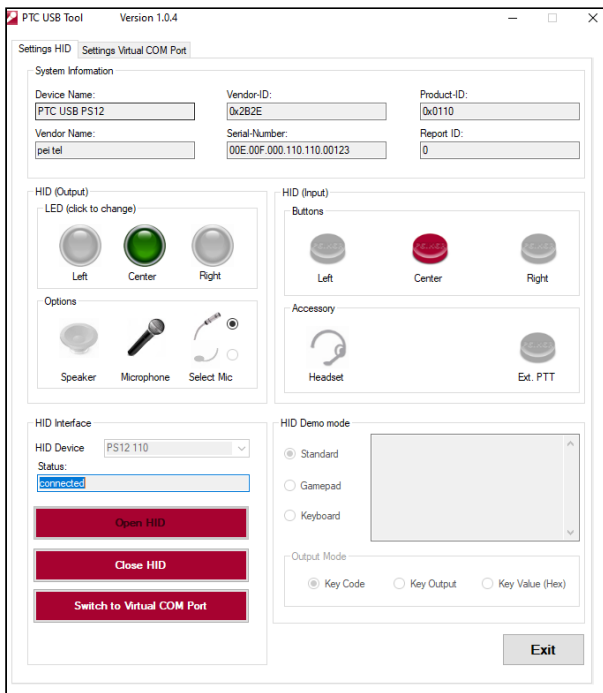
### 2.2 Run the program "PTC USB demo" and choose the correct "HID Device"

- select "HID Device" from the drop-down menu
  - the "HID device" is a combination of the pei tel USB device (PS12, PS20, HA11, ...) and the product type that is listed on the product label
- press the button "Open device"

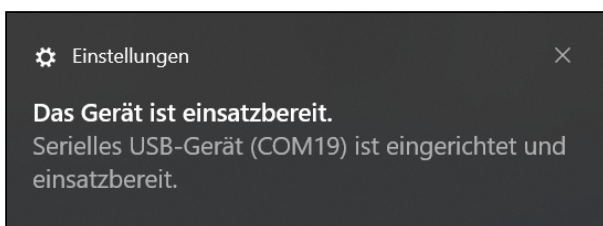


### 3 Change the HID Device Mode

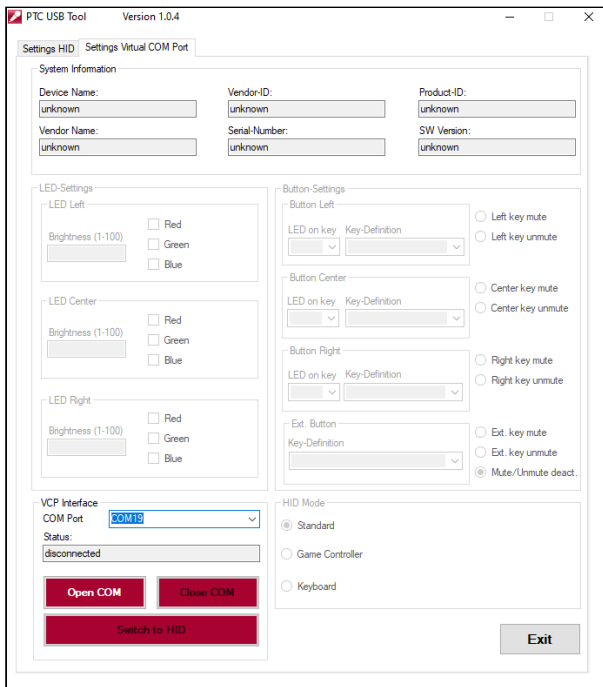
#### 3.1 Click "Switch to Virtual COM Port"



#### 3.2 The device will reboot and will then be recognized by the computer as a Serial USB-device (COM-port device)

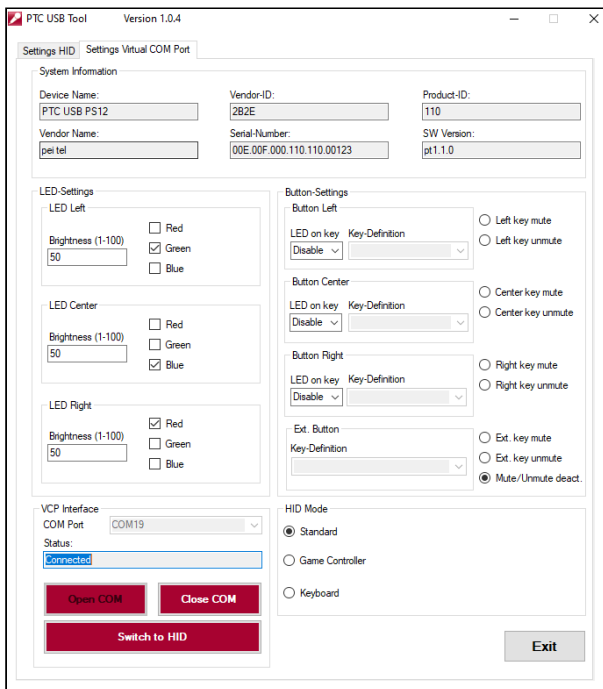


### 3.3 The program "PTC USB Tool" automatically changes the tab to "Settings Virtual COM Port"



### 3.4 Choose the respective COM Port from the drop-down menu and click "Open COM"

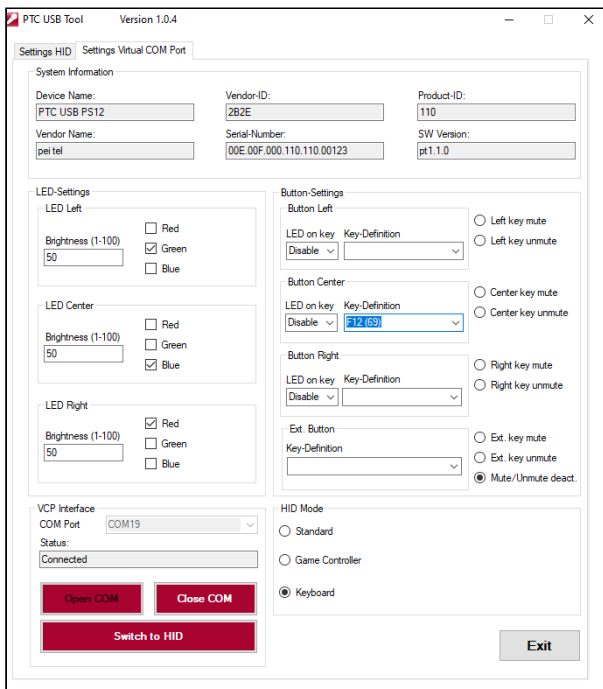
⚠ Different HID modes are available starting with firmware pt1.1.0



### 3.5 Select the desired HID Mode

pei tel USB devices support different HID Modes. This means that the digital inputs (like buttons) are recognized by the computer in different ways.

HID Mode	Function
Standard	the HID inputs will be sent out according to our Application Note AN1002
Game Controller	the HID inputs will be recognized as button of a Game Controller <ul style="list-style-type: none"> <li>Center button = 1</li> <li>Left button = 2</li> <li>right button = 3</li> <li>external button = 4</li> </ul>
Keyboard	the HID inputs will be recognized as a key of a keyboard <ul style="list-style-type: none"> <li>the desired key can be assigned for each button via the drop-down menu</li> </ul>



### 3.6 Click "Switch to HID" to return to normal USB mode

- the pei tel USB device will reboot and restart as USB device with the set values/settings